



# RecycleSmart Board of Directors Meeting

September 25, 2025





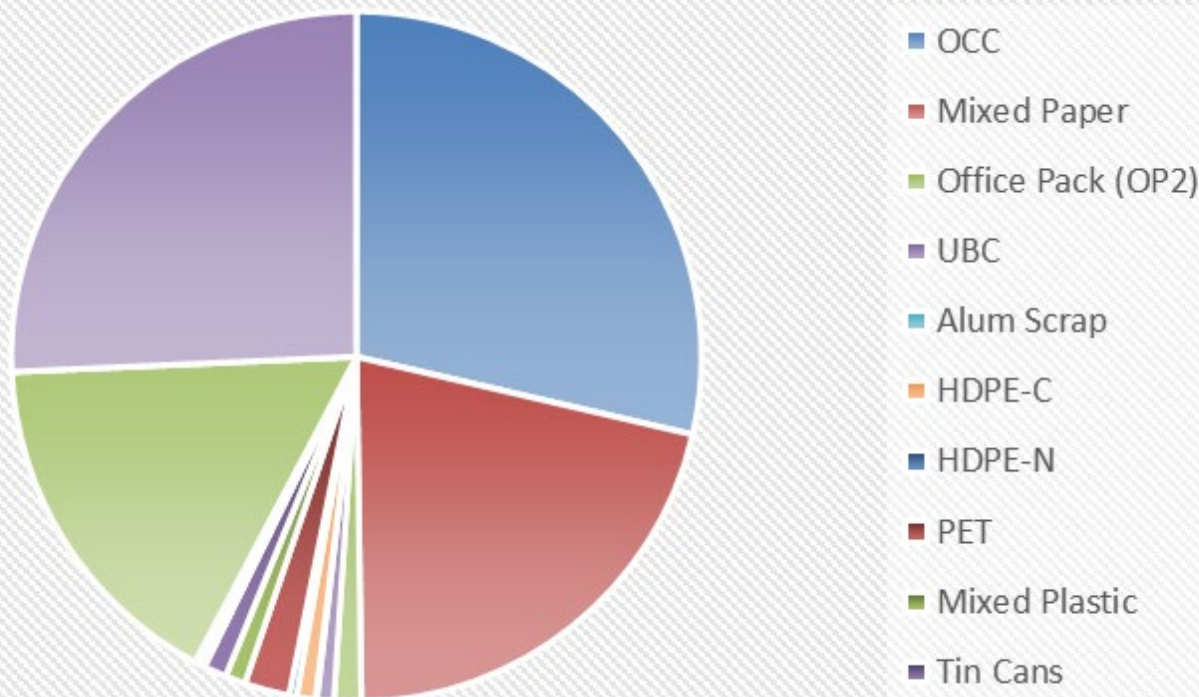
# Recycling Operations



**Mt. Diablo Resource Recovery**

Trusted + Proven + Essential

## Commodities Sold Composition



### Key Highlights

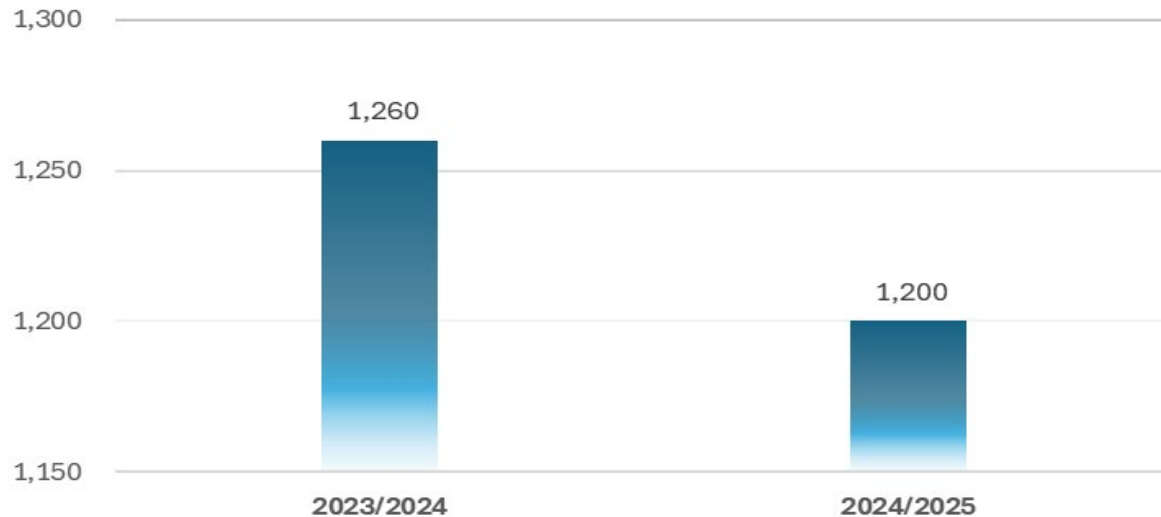
- Total inbound volume trending flat YOY
  - Fiscal Year 24/25 = 38,192 tons
- Cardboard (OCC) represents 28% of the Commodities Sold Composition
- Recovery rate average = ~ 74%
- Fiscal Year 24/25 average commodity sales value = \$91.69 per ton
- Current Fiscal Year to Date average commodity sales value is down to \$85.59 per ton
- Fiscal Year 24/25 revenue share back to RecycleSmart = \$907,735.32

# Reuse & Battery Collection Operations

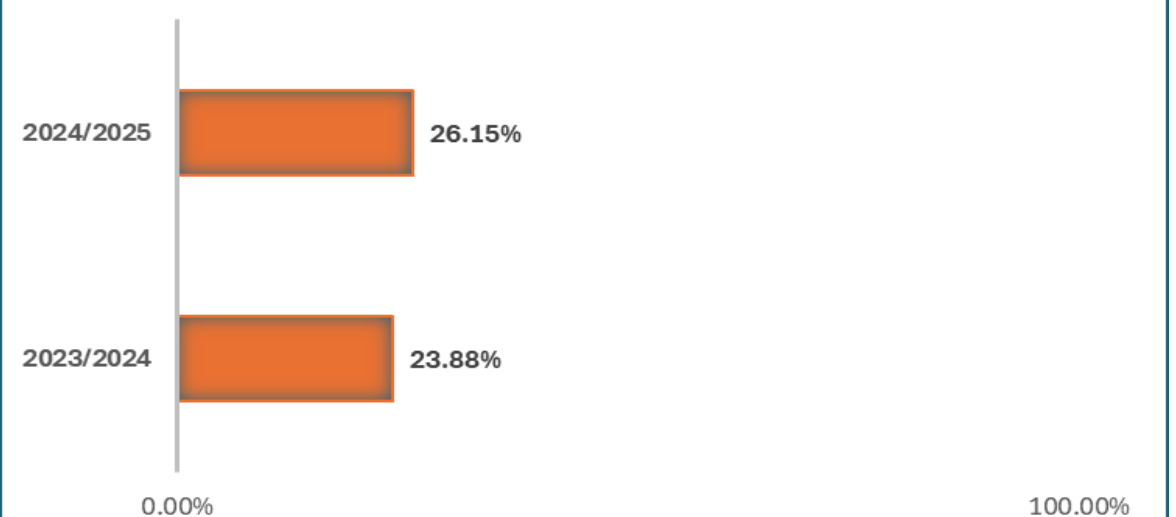


- Total inbound volume 1,200 tons 2024/2025
- Participation rate up 2.27% in 2024/2025
- 38,900 lbs. of batteries collected in 2025 vs. 38,640 lbs. in 2024
- Currently working with over 20 various non-profit organizations
- Prior 12-month diversion rate was ~88%

## INBOUND TONNAGE



## PARTICIPATION RATE



# Reuse – Non-Profit Organizations



Adopt a Family Bikes

Bike Concord

Cal AIM of Contra Costa County

Contra Costa Health

Contra Costa Health - CORE

Contra Costa Interfaith Coalition

Recycle for Change

Contra Costa Mental Health

Contra Costa Public Health Services - ECM

Core Outreach

Federacion Jalisco

First Tee

Grateful Gatherings

Hidden Valley Elementary

Homeless Action Coalition

Hospice East Bay

Hume Center

Make it Home

Pacific Clinics

Reach Teach Empower

St. Vincent de Paul

Shelter Inc.

The Buy Nothing Group

The Plant Exchange

Village Bike Project

Youth Homes Thrift Shop



# Reuse – Special Events & Pilot Programs



**School Supply  
Giveaway**



**Halloween Costume  
Exchange**



**College  
Moveouts**



# Thank you



**Mt. Diablo Resource Recovery**  
Trusted + Proven + Essential





# **Electronic Annual Report (EAR) & SB 1383/AB 939 Compliance**

September 25, 2025  
Board of Directors Meeting



# Electronic Annual Report (EAR)

## Purpose & Coverage

- Mechanism for reporting on AB 939 & SB 1383 compliance
- Due to CalRecycle on Aug 1 of each year
- Looks back on 2024
- Authority's EAR covers the member agencies
- County submits its own





# Diversion Equivalent 2015-2024

Year	Authority Pounds Per Capita Per Day Disposal Limit	Pounds Per Capita Per Day Disposal	Total Disposal	CalRecycle Equivalent Diversion Rate	Under Limit
2015	4.7	3.6	115,638	62%	Yes
2016	4.7	3.7	118,105	61%	Yes
2017	4.7	3.7	120,096	61%	Yes
2018	4.7	3.7	118,865	60%	Yes
2019	4.7	3.5	109,156	64%	Yes
2020	4.7	3.5	111,440	63%	Yes
2021	4.7	3.3	106,654	65%	Yes
2022	4.7	3.5	112,195	63%	Yes
2023	4.7	3.4	108,273	64%	Yes
2024	4.7	3.3	104,952	65%	Yes

# SB 1383

## Short-Lived Climate Pollutant Reduction Strategy “Keep Organics Out of Landfills”

- Reduce organic waste disposal 50% by 2020 and 75% by 2025 Statewide.
- Rescue for people to eat at least 20% of currently disposed surplus food by 2025.





# SB 1383 – CA Compost Law

Short-Lived Climate Pollutant Reduction Strategy

“Keep Organics Out of Landfills”

- ✓ Organics, Recycling and Landfill Service (Green, Blue and Black/Gray)
- ✓ Food Recovery
- ✓ Procurement of finished compost
- ✓ Outreach and Education
- ✓ Food Recovery
- ✓ Enforcement
- ✓ Waivers
- ✓ WELOs
- ✓ Route Reviews

# 2024 Account Compliance

- **Single Family:** Every SF account has a three-cart system.
- **Multifamily:** Of the 417 multifamily accounts, 99% are in compliance, 2 are not.
- **Commercial:** Of the 1,915 commercial accounts, 99% are in compliance, 8 are not.

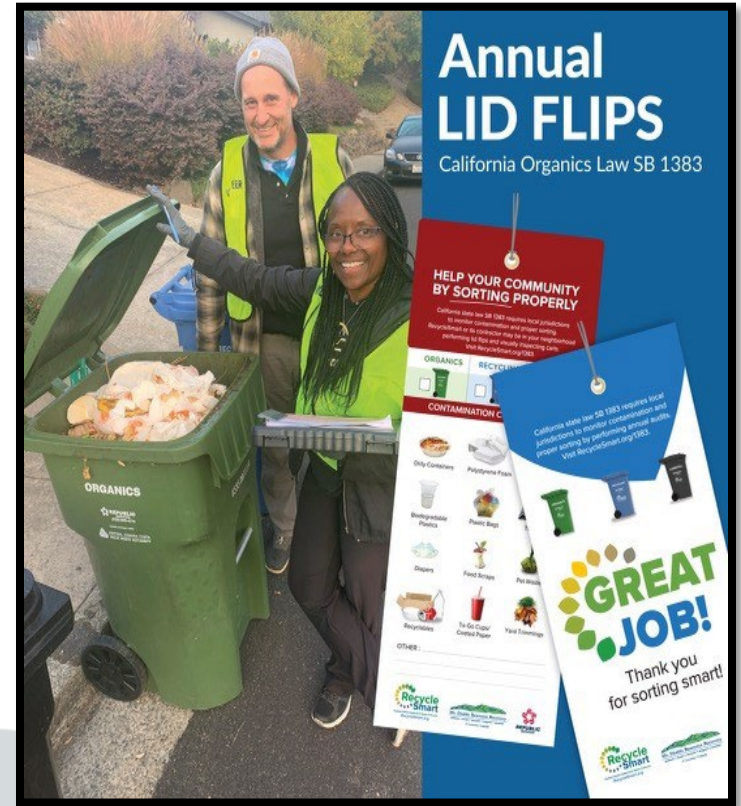


# Waivers

Member Agency	De Minimis	Physical Space	Total
<b>City of Lafayette</b>	<b>74</b>		<b>74</b>
Commercial	72		
Multi-Family	2		
<b>City of Orinda</b>	<b>28</b>		<b>28</b>
Commercial	28		
<b>City of Walnut Creek</b>	<b>357</b>	<b>6</b>	<b>363</b>
Commercial	352	4	
Multi-Family	5	2	
<b>Contra Costa County</b>	<b>61</b>	<b>4</b>	<b>65</b>
Commercial	61	2	
Multi-Family		2	
<b>Town of Danville</b>	<b>114</b>	<b>16</b>	<b>130</b>
Commercial	114	11	
Multi-Family		5	
<b>Town of Moraga</b>	<b>34</b>		<b>34</b>
Commercial	33		
Multi-Family	1		
<b>Total</b>	<b>668</b>	<b>26</b>	<b>694</b>

# Route Reviews

- Required Annually
- 2,012 resi and commercial  
Cart/bin audits in 2024
- 69 routes (49 resi /20 com)
- Five field days
- Findings kept in Recyclist
- Update/improve Protocol  
annually



# Route Review Findings

Program provides valuable information about sorting behaviors:

- “Good stuff” in the garbage
- Non-recyclables in the recycling
- Plastics in the organics



# Outreach and Education

- RecycleSmart.org
- Quarterly residential newsletter
- Annual service guides
- Training videos
- Technical assistance
- Community events
- Truck signs
- Local advertising
- Social media
- Route reviews



PF665

## Residential Service Guide



### Senate Bill 1383: Composting organics is now the law!

Organic material accounts for more than half of the material in California's waste stream. Greenhouse gas emissions caused by the decomposition of organic material in landfills contribute to climate change. Residents are required to separate organics, including all food scraps, uncoated food-soiled paper, and yard trimmings, for composting. Visit [RecycleSmart.org/1383](https://RecycleSmart.org/1383) or use the QR code below for more information.



#### Residents can participate by:

- Preventing/reducing food waste (reducing food waste generation)
- Backyard composting
- Using the curbside green organics cart

**SB 1383 also requires local jurisdictions to monitor contamination and proper sorting of organics by performing annual route audits. RecycleSmart or its contractor may be in your neighborhood throughout the year assessing your carts.**

### Organics Programs



Residents can compost organics at home and/or use the curbside green organics cart.

Backyard composting is an easy process that turns yard trimmings and food scraps into a natural soil amendment to help grow healthy food. Visit [RecycleSmart.org/Composting](https://RecycleSmart.org/Composting) for information on quarterly savings on your Republic Services bill, workshops and discounted compost bins.

Or, let Republic Services compost for you! Place organics in your green cart. A free food scrap pail is available to collect your scraps. Pails can be lined with newspaper, paper towels, paper bags, or BPI-Certified compostable bags. Call Republic Services at 925.685.4711 to request a pail. For green cart information and tips visit [RecycleSmart.org/GreenCartSmart](https://RecycleSmart.org/GreenCartSmart)

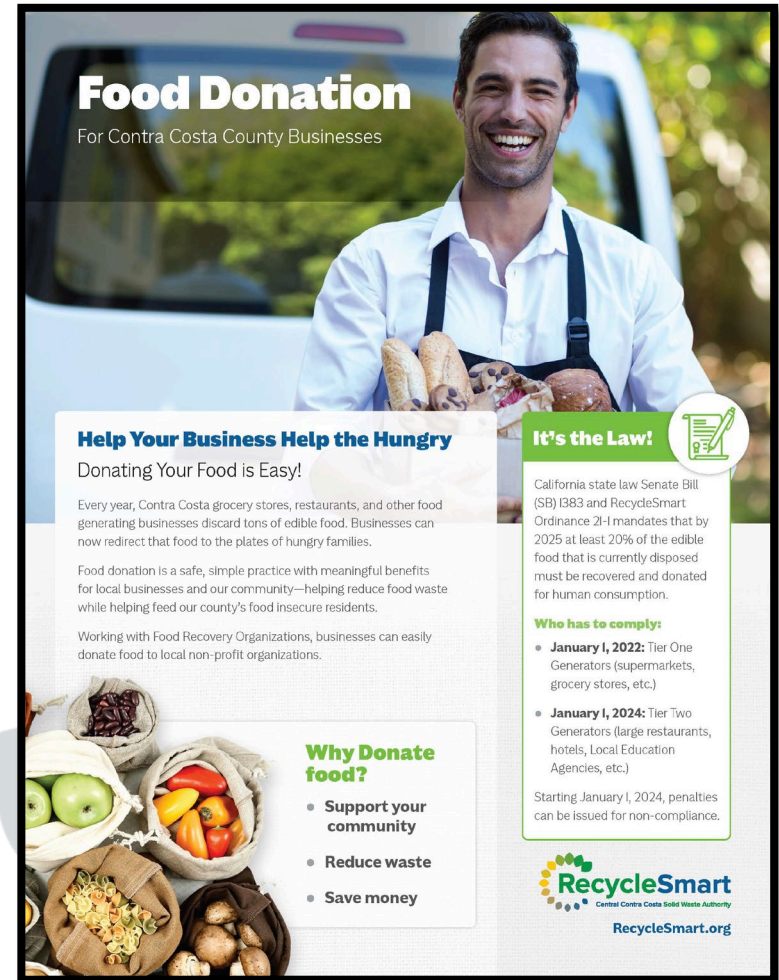


**Important:** Compostable plastics such as cold cups and utensils **do not break down** in our compost process. These should go in your **black landfill cart**. BPI-Certified compostable bags are the only compostable plastic material allowed in the green cart.



# Edible Food Recovery

- Maintain Tier 1 (2022) and Tier 2 (2024) covered generator lists:
  - Tier 1 (30): Supermarkets and grocery stores, food service providers and distributors, wholesale food vendors.
  - Tier 2 (35): Large restaurants (250 seats), hotels, health facilities, large venues and events, and Local Education Agencies (school district).
- CCHS Inspections
  - Notice of Violation (NOV) and technical assistance



**Food Donation**  
For Contra Costa County Businesses

**Help Your Business Help the Hungry**  
Donating Your Food is Easy!

Every year, Contra Costa grocery stores, restaurants, and other food generating businesses discard tons of edible food. Businesses can now redirect that food to the plates of hungry families.

Food donation is a safe, simple practice with meaningful benefits for local businesses and our community—helping reduce food waste while helping feed our county's food insecure residents.

Working with Food Recovery Organizations, businesses can easily donate food to local non-profit organizations.

**Why Donate food?**

- Support your community
- Reduce waste
- Save money

**It's the Law!**

California state law Senate Bill (SB) 1383 and RecycleSmart Ordinance 21-I mandates that by 2025 at least 20% of the edible food that is currently disposed must be recovered and donated for human consumption.

**Who has to comply:**

- **January 1, 2022:** Tier One Generators (supermarkets, grocery stores, etc.)
- **January 1, 2024:** Tier Two Generators (large restaurants, hotels, Local Education Agencies, etc.)

Starting January 1, 2024, penalties can be issued for non-compliance.

**RecycleSmart**  
Central Contra Costa Solid Waste Authority  
RecycleSmart.org

# Implementation Record

- Audit requirement once every four years
  - “JACE” (Jurisdiction and Agency Compliance and Enforcement)
  - Records related to SB 1383 compliance
- Using SB 1383 grant funds to assess
- Jurisdiction requirements



# SB 1383 Member Agency Responsibilities

Monthly Member  
Agency Liaison  
Meeting

## Procurement



Recycled paper,  
mulch, compost, etc.  
+ related record  
keeping

## CalGreen



Recovery of organic  
waste from mixed  
C&D + adequate  
space for containers  
in commercial  
buildings

## Water Efficient Landscape Ordinance



Adopt a  
WELO

# In Conclusion

- Staff submitted the Electronic Annual Report (EAR) on August 1.
- Authority has met its AB 939 diversion requirement for 2024.
- Authority's EAR reported on all aspects of SB 1383 on behalf of all the member agencies except the County.
- The Authority provided the County with the data needed for reporting to CalRecycle.



# **Rate Year 12**

**(March 1, 2026 – February 28, 2027)**

## **Rate Setting**

### **Preliminary Results**

Board of Directors Meeting  
September 25, 2025



# **RY 12 Rate Setting Schedule**

Milestone	Date
Republic submits rate application	September 15, 2025
September Board Meeting: Present preliminary results	September 25, 2025
Individual meetings with Member Agencies	October – November 2025
December Board Meeting: Review draft rates	December 11, 2025
January Board Meeting: Adopt Rates	January 22, 2026
Rates take effect	March 1, 2026

# Index-Based Method

Cost	Adjusted by
Union Labor	Per Labor Agreement
Other Labor	Consumer Price Index
Vehicle Related Costs	Motor Vehicle Maintenance & Repair Index
Fuel Costs	Compressed Natural Gas (CNG) Fuel Pricing Index
Other Costs	Consumer Price Index
Transfer, Composting & Disposal Costs	Per ton rates set in the franchise agreement x tons from most recent 12 months



# Republic Services' Compensation

- Republic Services' compensation = Approximately 75% of the rates
- RY 12 index-based adjustment to Republic Services' Compensation = 1.32%
- Special Rate Adjustment = 3.98%
- Total change in Republic Services' compensation = 5.30%

# Special Rate Adjustment

Period	Four-Week Period Beginning	Number of Missed Residential Collections	Metric Met (2,700 or fewer)
1	October 14, 2024	1,187	Yes
2	November 11, 2024	1,808	Yes
3	December 9, 2024	2,165	Yes
4	January 6, 2025	3,658	No
5	February 3, 2025	1,335	Yes
6	March 3, 2025	1,076	Yes
7	March 31, 2025	1,839	Yes
8	April 28, 2025	990	Yes
9	May 26, 2025	2,655	Yes
10	June 23, 2025	2,205	Yes
11	July 21, 2025	881	Yes
12	August 18, 2025	1,974	Yes

Special Rate Adjustment per Four-Week Period = \$194,410.46 x 11 = \$2,138,515.02

# Other Rate Components

- Other rate components = Approximately 25% of the rates
- Payment to MDRR for recyclables processing
- Payment to MDRR for the reuse program
- JPA administrative costs
- Member agency fees



# Next Steps

- Individual meetings with Member Agencies
  - Discuss Rate Years 12, 1, 2, 3
  - Propose multi-year rate smoothing strategies
- Review draft rates at December 11 Board Meeting

# School Recycling Program

Progress on our Path to 75%  
Annual Update – September 2025



# 2024-25 Highlights

55

assemblies and  
classroom presentations

20

schools at 75%+

2,517

tons diverted from  
disposal

6,189

students reached

36

schools at 50%+

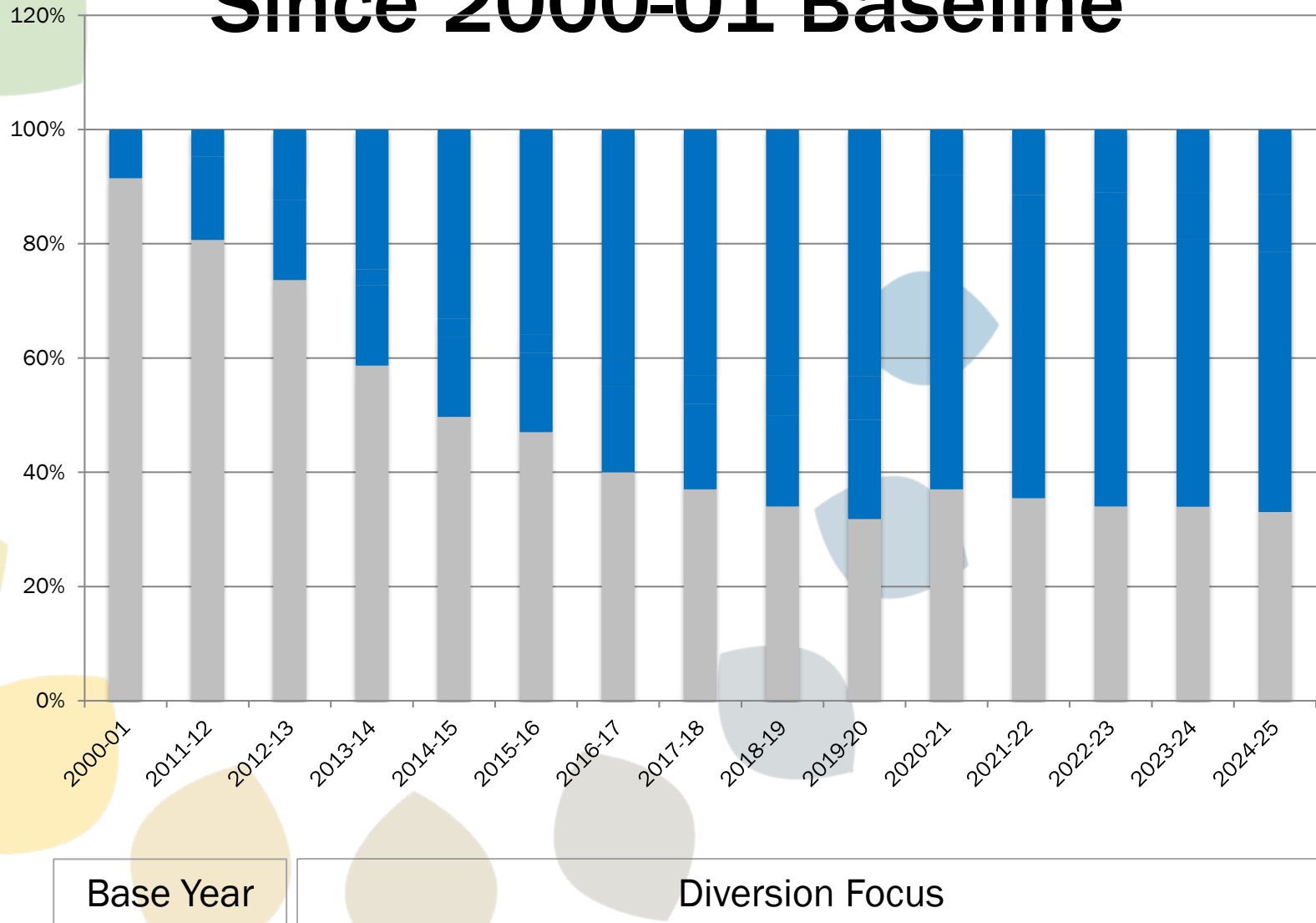
4,558

metric tons of GHGs  
reduced\*

\*Equivalent of removing  
968 passenger vehicles  
from the road



# Diversion Rate Increases Since 2000-01 Baseline



# Service Levels by School District

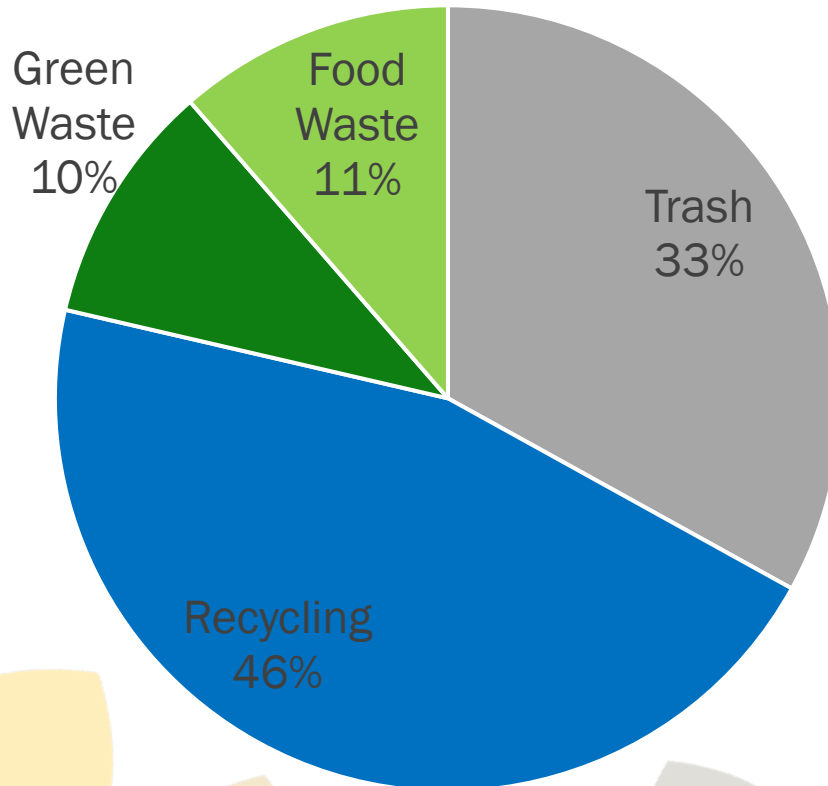
District	Diversion rate <sup>1</sup>	Change since June 2024
Acalanes	65%	2%
Lafayette	66%	-1%
Moraga	74%	0%
Mt. Diablo	63%	2%
Orinda	67%	2%
San Ramon Valley <sup>2</sup>	39%	0%
Walnut Creek	78%	0%
Private	65%	1%

<sup>1</sup>Based on collection service volumes and volume to weight conversion factors

<sup>2</sup>Recycling and trash self-hauled by district staff



# Overall Measured Diversion Rate Based on Service Levels



Does not include San Ramon Valley Schools (recycling and trash is self-hauled by district staff)

# Diversion Rates by School/Community

## Contra Costa County (unincorporated)

School	Diversion Rate
Alamo Elementary	66%
Creekside Elementary	56%
Murwood Elementary	78%
Parkmead Elementary	77%
Rancho Romero Elementary	51%
Stone Valley Middle School	53%
Tassajara Hills Elementary	63%

Awards	
Wastebusters	
Honorable Mention	

## Danville

School	Diversion Rate
Athenian	67%
Charlotte Wood Middle School	42%
Diablo Vista Middle School	35%
Green Valley Elementary	50%
Greenbrook Elementary	58%
John Baldwin Elementary	63%
Los Cerros Middle School	53%
Montair Elementary	58%
Monte Vista High School	16%
San Ramon Valley High School	28%
St. Isidore	73%
Sycamore Valley Elementary	52%
Vista Grande Elementary	64%

# Diversion Rates by School/Community

## Lafayette

School	Diversion Rate
Acalanes High School	58%
Bentley School	40%
Burton Valley Elementary	81%
Contra Costa Jewish Day School	76%
Happy Valley Elementary	69%
Lafayette Elementary	56%
Meher School	75%
Springhill Elementary	77%
Stanley Middle School	49%
St. Perpetua	57%

## Awards

Wastebusters	
Honorable Mention	

## Moraga

School	Diversion Rate
Camino Pablo Elementary	79%
Campolindo High School	64%
Donald Rheem Elementary	76%
Joaquin Moraga Intermediate	69%
Los Perales Elementary	76%
Saklan School	64%

## Orinda

School	Diversion Rate
Del Rey Elementary	66%
Glorietta Elementary	65%
Holden High School	81%
Miramonte High School	75%
Orinda Intermediate School	63%
Orinda Academy	63%
Sleepy Hollow Elementary	68%
Wagner Ranch Elementary	78%

# Diversion Rates by School/Community

Walnut Creek	
School	Diversion Rate
Bancroft Elementary	62%
Berean Christian	68%
Buena Vista Elementary	78%
Contra Costa Christian	61%
CC School of Performing Arts	56%
Del Valle High School	59%
Eagle Peak Montessori	78%
Foothill Middle School	65%
Indian Valley Elementary	76%

Walnut Creek	
School	Diversion Rate
Las Lomas High School	56%
Northgate High School	58%
NorthCreek Academy	43%
Seven Hills School	88%
St. Mary's	76%
Tice Creek School	79%
Valle Verde Elementary	48%
Walnut Acres Elementary	66%
Walnut Creek Christian	44%
Walnut Creek Intermediate	79%
Walnut Heights Elementary	78%

Awards	
Wastebusters	
Honorable Mention	

# Food Share and Food Donation





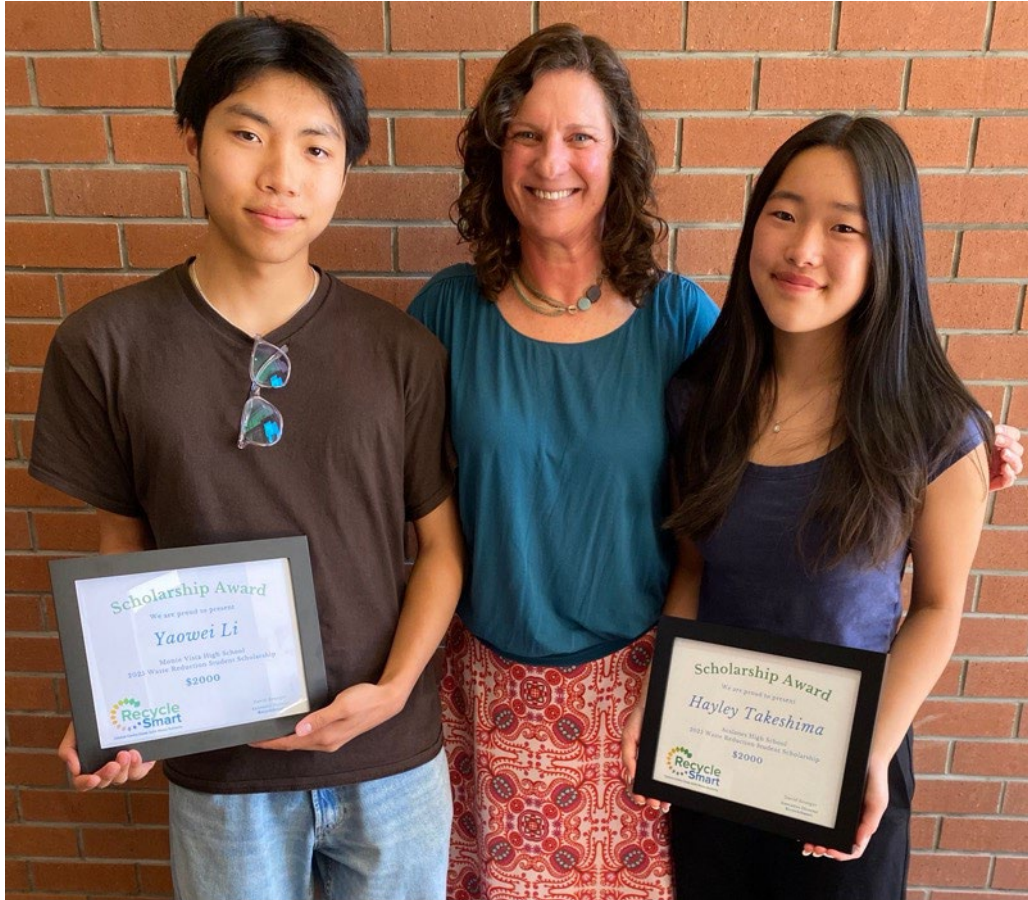
# 2022-25 Food Donation by District

District	Pounds	Tons (2000 pounds/ton)	Meals (1.1 pounds/meal)
Acalanes	3,561	1.7	3,237
Lafayette	17,222	8.6	15,656
Moraga	4,536	2.3	4,124
Mt. Diablo	10,134	5.1	9,213
Orinda	3,232	1.6	2,938
San Ramon Valley	23,648	11.8	21,498
Walnut Creek	5,166	2.6	4,696
Total	67,499	33.7	61,363

# Reusable Foodware Expansion



# 2025 Student Scholarships



Yaowei Li,  
Monte Vista High School

Hayley Takeshima,  
Acalanes High School



# RecycleSmart Eco Hero 2025 Summer Camps



September 25, 2025  
Board of Directors Meeting

# Expanding!

About \$6,000 / Camp Annually

## 2024

- Pilot with Orinda

## 2025

- Orinda
- Danville

## 2026

- Orinda
- Danville
- Moraga
- Walnut Creek (up to 75 kids!)
- Hopefully, Lafayette!





# Our Wonderful Teachers

## Marian Woodard

- El Monte Garden Educator (MDUSD)
- Co-Founder Rodgers Ranch Urban Farm
- RecycleSmart Compost Instructor

## Alice Burns

- Bancroft Garden Educator (MDUSD)

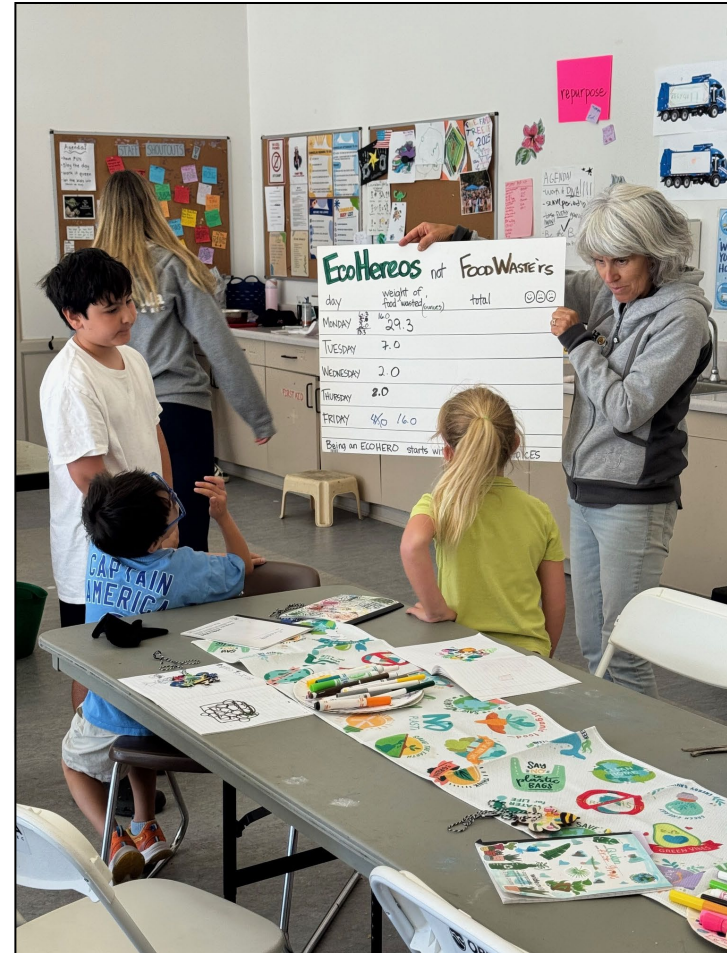


# Camp Activities





# We Compost our Food Scraps





# Composting Worms



# California Park & Recreation Society

## District 3 (Bay Area)

### 2024 Best Program in Partnership with City of Orinda

**Thank you  
Sheena  
and Todd!**



**ycle  
Smart**

Central Contra Costa Solid Waste Authority